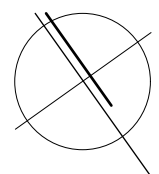


	unit number	unit 01	unit 02	unit 03	unit 04	unit 05	unit 06	unit 07	unit 08	unit 09	unit 10	unit 11	unit 12	unit 13	unit 14	unit 15
9:00am-9:30am																
9:30am-10:00am																
10:00am-10:30am																
10:30am-11:00am																
11:00am-11:30am																
11:30am-12:00pm																
12:00pm-12:30pm																
12:30pm-1:00pm																
1:00pm-1:30pm																
1:30pm-2:00pm																
2:00pm-2:30pm																
2:30pm-3:00pm																
total hours									6	6		4	3			
	unit number	unit 16	unit 17	unit 18	unit 19	unit 20	unit 21	unit 22	unit 23	unit 24	unit 25	unit 26	unit 27	unit 28	unit 29	unit 30
9:00am-9:30am																
9:30am-10:00am																
10:00am-10:30am																
10:30am-11:00am																
11:00am-11:30am																
11:30am-12:00pm																
12:00pm-12:30pm																
12:30pm-1:00pm																
1:00pm-1:30pm																
1:30pm-2:00pm																
2:00pm-2:30pm																
2:30pm-3:00pm																
total hours				4.5	6	6	5.5	4	4.5	6	3.5		3.5		4.5	3.5
	unit number	unit 31	unit 32	unit 33	unit 34	unit 35	unit 36	unit 37	unit 38	unit 39	unit 40	unit 41	unit 42	unit 43	unit 44	unit 45
9:00am-9:30am																
9:30am-10:00am																
10:00am-10:30am																
10:30am-11:00am																
11:00am-11:30am																
11:30am-12:00pm																
12:00pm-12:30pm																
12:30pm-1:00pm																
1:00pm-1:30pm																
1:30pm-2:00pm																
2:00pm-2:30pm																
2:30pm-3:00pm																
total hours		4	5	6	4	6	6	4	4	3	5	3	4.5	4.5	4	4.5
	unit number	unit 46	unit 47	unit 48	unit 49	unit 50	unit 51	unit 52	unit 53	unit 54	unit 55	managers	caretaker 1	caretaker 2		
9:00am-9:30am																
9:30am-10:00am																
10:00am-10:30am																
10:30am-11:00am																
11:00am-11:30am																
11:30am-12:00pm																
12:00pm-12:30pm																
12:30pm-1:00pm																
1:00pm-1:30pm																
1:30pm-2:00pm																
2:00pm-2:30pm																
2:30pm-3:00pm																
total hours		6	6	6	4	4.5	4.5	4.5	5.5	6	6		6	6	4	

- indicates solar access to both living and private open space
- light yellow indicates solar access to private open space only
- light pink indicates solar access to living space only

6 units receive no direct sunlight between 9am-3pm on 21 june = 10.3 %

43 units achieve 3hrs solar access between 9am-3pm on 21 june = 74.1 %



## solar & daylight analysis 03

proposed development

23 Meares Place & 33 Collins Street, KIAMA

kennedy associates architects level 3 / 1 booth street annandale 2038 p + 61 2 9557 6466 f + 61 2 9557 6477 nominated architect - steve kennedy - registration no. 5828



1821 - DA 34 C

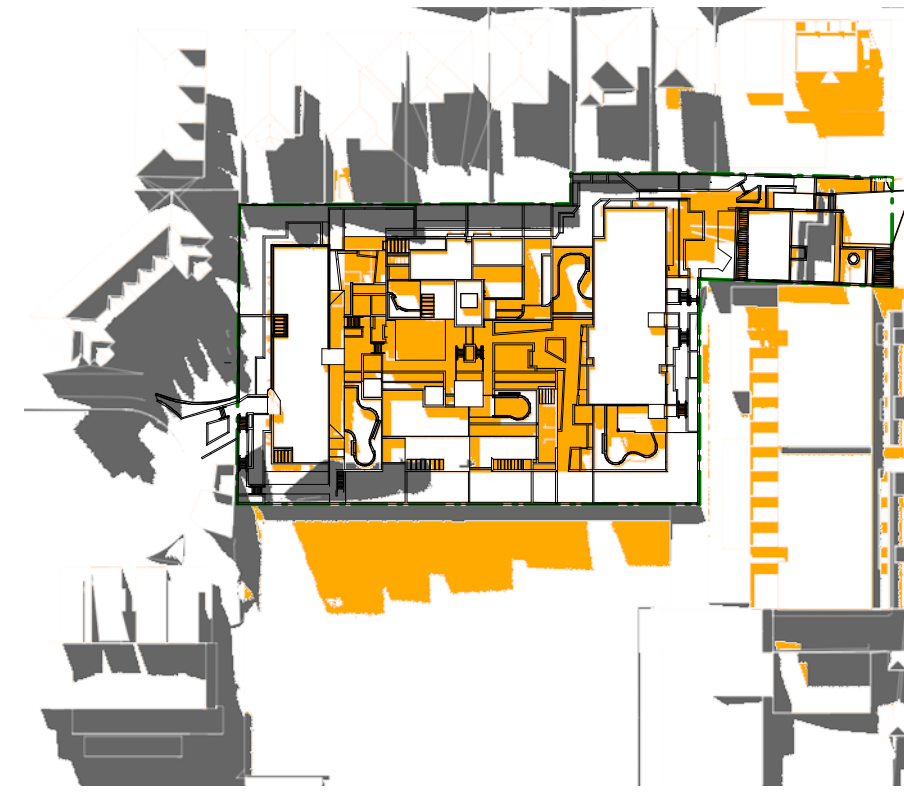
C 18/07/18 for S34 meeting



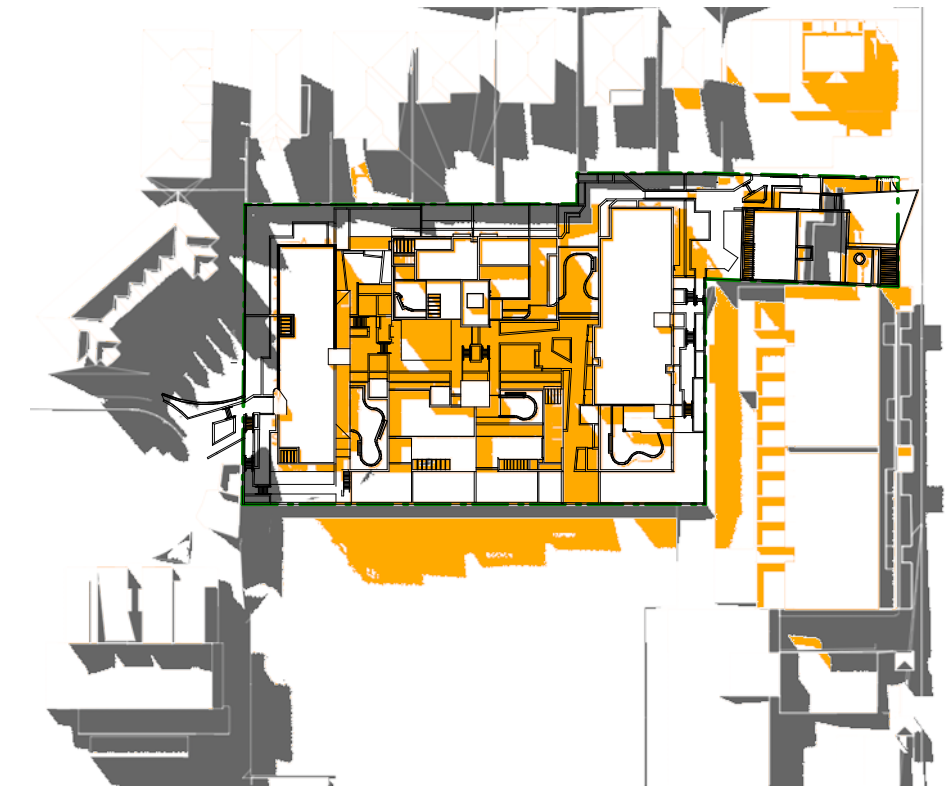
09:00AM



10:00AM



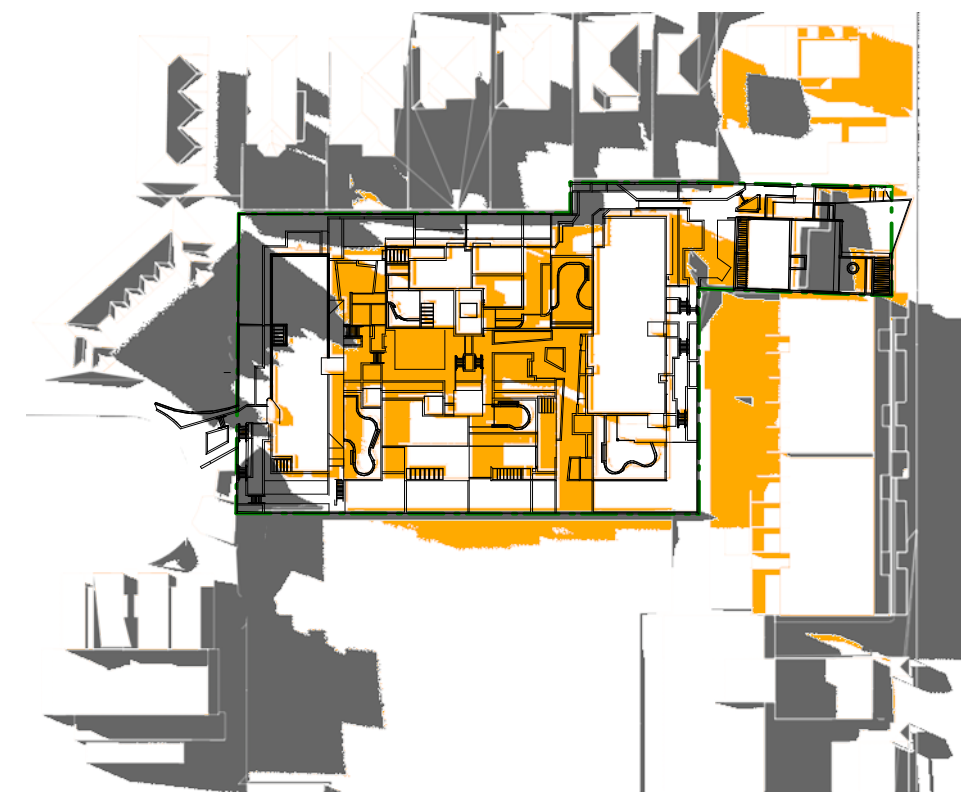
11:00AM



12:00PM



1:00PM



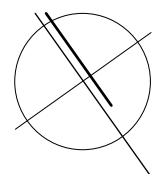
2:00PM



3:00PM

shadows cast by proposed development at ground level  
 shadows cast by existing buildings & fences

legend



shadow analysis plans - winter solstice - existing x proposed

proposed development

1821 - working SOLAR ANALYSIS.vwx

23 Meares Place & 33 Collins Street, KIAMA

kennedy associates architects level 3 / 1 booth street annandale 2038 p + 61 2 9557 6466 f + 61 2 9557 6477 nominated architect - steve kennedy - registration no. 5828



in collaboration with



1821 - DA 36 C

C 18/07/18 for S34 meeting



**09:00 AM**  
 area of PUCOS receiving sun **298.3 sq m**  
 percentage of total PUCOS **44%**



**09:30 AM**  
 area of PUCOS receiving sun **375.2 sq m**  
 percentage of total PUCOS **55.2%**



**10:00 AM**  
 area of PUCOS receiving sun **381.7 sq m**  
 percentage of total PUCOS **56.2%**



**10:30 AM**  
 area of PUCOS receiving sun **377.7 sq m**  
 percentage of total PUCOS **55.6%**



**11:00 AM**  
 area of PUCOS receiving sun **381.0 sq m**  
 percentage of total PUCOS **56%**



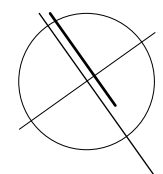
**11:30 AM**  
 area of PUCOS receiving sun **377.9 sq m**  
 percentage of total PUCOS **56%**



**12:00 PM**  
 area of PUCOS receiving sun **367.1 sq m**  
 percentage of total PUCOS **54%**

- solar access to communal open space
- extent of principal useable communal open space
- shadows cast by proposed development

**legend**



shadow analysis plans - winter solstice - communal open space  
 proposed development

1821 -working SOLAR ANALYSIS.vwx

23 Meares Place & 33 Collins Street, KIAMA

kennedy associates architects level 3 / 1 booth street annandale 2038 p + 61 2 9557 6466 f + 61 2 9557 6477 nominated architect - steve kennedy - registration no. 5828



1821 - DA 37 C

C 18/07/18 for S34 meeting



**12:30 PM**  
 area of PUCOS receiving sun **337.8 sq m**  
 percentage of total PUCOS **50%**



**01:00 PM**  
 area of PUCOS receiving sun **320.7 sq m**  
 percentage of total PUCOS **47%**



**01:30 PM**  
 area of PUCOS receiving sun **305.7 sq m**  
 percentage of total PUCOS **45%**



**02:00 PM**  
 area of PUCOS receiving sun **274.9 sq m**  
 percentage of total PUCOS **40%**



**02:30 PM**  
 area of PUCOS receiving sun **254.5 sq m**  
 percentage of total PUCOS **37%**



**03:00 PM**  
 area of PUCOS receiving sun **225.8 sq m**  
 percentage of total PUCOS **33%**

site area	5579 m2		
Communal Open Space	required 25% of site area = 1395 m2	proposed 26% of site area = 1454 m2	complies yes
Principal Usable COS	-	<b>679 m2</b>	
2h solar access to PUCOS	50% of PUCOS = 340 m2	56% of PUCOS = 379 m2 (between 09:30am and 11:30am)	yes

**Note:** all 6 roof terrace COS areas receive a minimum of 2 hours of sun to at least 50% of its area  
 some portions of the PUCOS receive sun for the entire period between 09:00am and 03:00pm

**Extracts from ADG:**

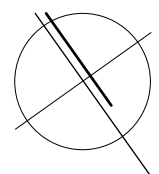
page 55 - Design criteria:  
 2. Developments achieve a minimum of 50% direct sunlight to the principal usable part of the communal open space for a minimum of 2 hours between 9 am and 3 pm on 21 June (mid winter)

page 55 - Design guidance:  
 Where communal open space cannot be provided at ground level, it should be provided on a podium or roof

page 79 - Design guidance:  
 Achieving design criteria may not be possible on some sites. This includes (...) south facing sloping sites

- solar access to communal open space
- extent of principal useable communal open space
- shadows cast by proposed development

**legend**



shadow analysis plans - winter solstice - communal open space

proposed development

23 Meares Place & 33 Collins Street, KIAMA

kennedy associates architects level 3 / 1 booth street annandale 2038 p + 61 2 9557 6466 f + 61 2 9557 6477 nominated architect - steve kennedy - registration no. 5828



1821 - DA 38 C

C 18/07/18 for S34 meeting